



Exchange
for good

— MADE IN ITALY —

Plate heat exchangers

Reliability for your
heat exchange

TAILOR MADE

HEAT EXCHANGERS
CIPRIANI



AUTOMOTIVE

- Hydraulic oil cooling
- Paint treatment
- Phosphate solutions' cooling



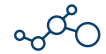
HVAC

- Heating with condensing boilers, water-to-water heat pumps, solar thermal
- Production of domestic hot water
- Hydronic systems for air conditioning/refrigeration
- District heating/district cooling
- Pool heating



MARINE

- Centralized engines' cooling
- Transmission oil cooling
- On board HVAC systems



CHEMICAL

- Acid cooling
- Alkaline solutions' cooling
- Technical water cooling



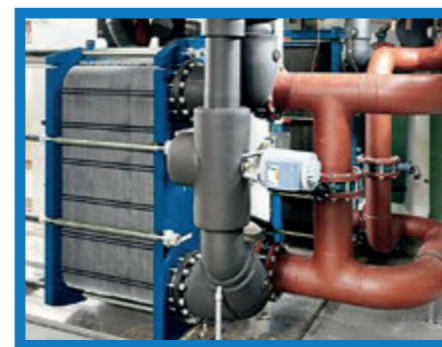
FOOD & DAIRY

- Thermal treatments for sugar industry
- Oils&beverage thermal treatments

Heating



Cooling



Energy Recovery



STEEL MILLS

- Continuous cooling systems
- Hydraulic oil cooling
- Molds/emulsions cooling



SURFACING CHEMICAL TREATMENTS

- Galvanic bathes cooling
- Paint heating
- Acid bath thermal regulation



MECHANICAL

- Cooling skids
- Fluids & utilities' heating
- Thermal regulation and recovering



IT SECTOR

- Data centers coolings and heating recovery
- Thermal treatments for semiconductor production



TEXTILE

- Detergents' heating recoveries
- Coloring heating

COMPANY - 360° Quality and Efficiency

Cipriani PHE is a leading company in the production of plate heat exchangers for the HVAC sector and for industry. Since 1987, we have continued to invest all our expertise to ensure superior quality, competitive, and tailor-made services and products.



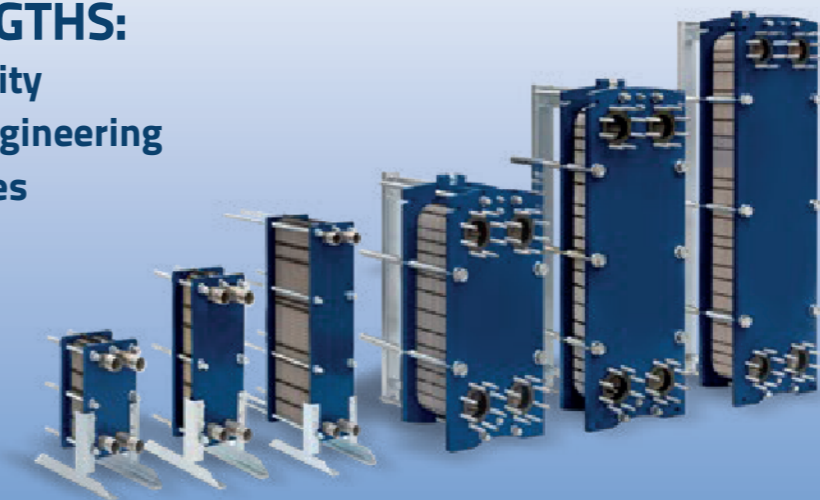
Head quarter Cipriani PHE - Verona - Italy

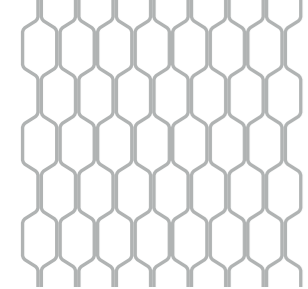
PRODUCT - Plate Heat Exchangers for Every Need

High thermal capacity and low pressure drops for a consistently well-balanced and high-performing configuration.

OUR STRENGTHS:

- Top-tier quality
- Dedicated engineering
- Fast deliveries





**Exchange
for good**

CIPRIANI PHE'S GLOBAL SERVICES

Cipriani PHE constantly develops **new methodologies and services** with the aim of simplifying, all the phases related to the **selection, purchase, and after-sales** of plate heat exchangers.



PHE MANAGER

The online software for reliable configuration

PHE Manager is the software designed for professionals who want to **configure their plate heat exchanger**, taking care of every single aspect. In just a few clicks, you can achieve your customized design through an intuitive, versatile, and comprehensive configurator.



MYPHE

Immediate assistance and genuine spare parts

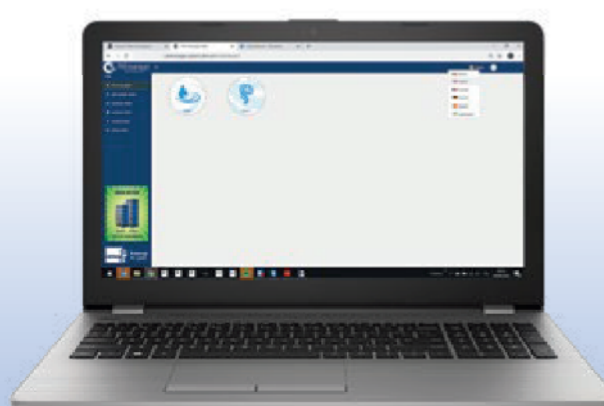
Thanks to a **team of experts**, Cipriani PHE stays close to its customers with **specialized technical support service**. MyPHE is the **web app** to know in detail the configuration of your plate heat exchanger and to be able to **request original spare parts quickly and accurately**.

PHEXPRESS

New e-shop

Purchase your **plate heat exchanger and spare parts online**, with **24-hours shipping!**

PHEexpress is the new e-commerce for selling plate heat exchangers and spare parts. **Every purchased product will be shipped within 24 hours of the order**, with the option to track the shipment. An online tool that simplifies and speeds up the purchasing experience for users.

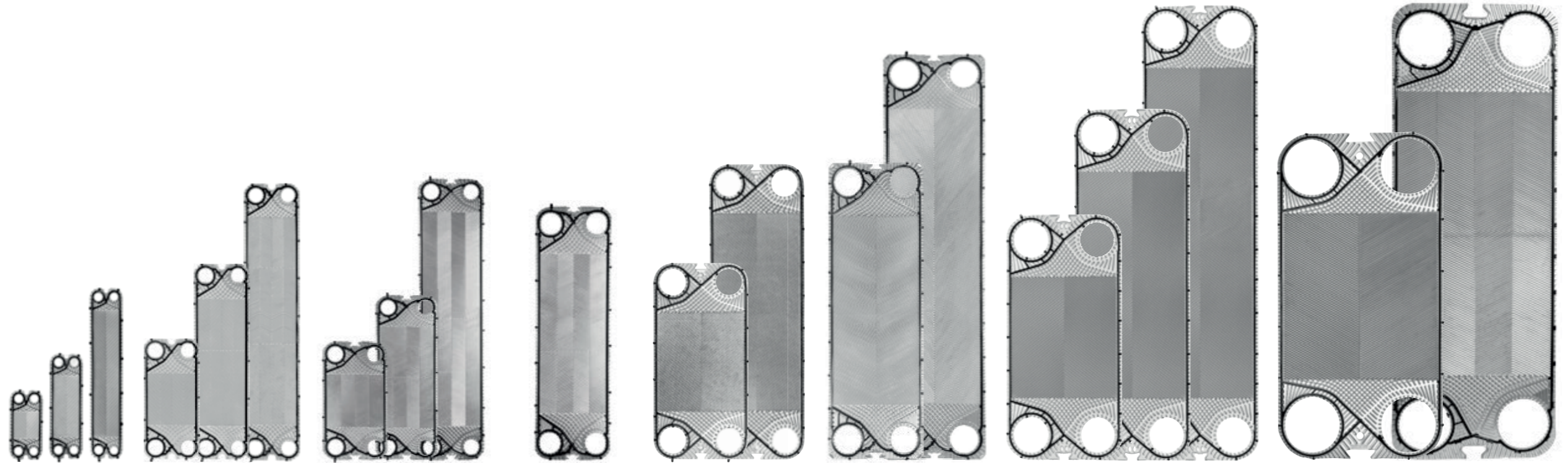


Follow us on:



Gasketed Plate Heat Exchangers

Our excellent geometries:
high efficiency and reduced pressure drop
for every need of heat exchange



MODELS		DN 32 (1 1/4")			DN 50 (2")			DN 65 (2 1/2 ")			DN 80 (3")	DN 100 (4")				DN 150 (6")			DN 200 (8")		
		S020+	S040+	S080+	S070+	S160+	S260+	S110+	S210+	S410+	S270+	S300+	S450+	S455+	S705+	S400+	S600+	S900+	S650+	S990+	
Water flow rate max	m³/h	19			63			80			110	240				380			800	730	
Heat transfer surface max	m²	1,6	3,1	8,2	11,8	41,2	63,8	17,8	31,7	99,1	68,5	108	193	188	276	215	355	631	334	534	
Plate corrugation angle	A/B	A			A/B			A/B			A/B	A/B				A/B			A/B	A/B	
Tightening quote	mm	2,9 x np			2,9 x np			3 x np			3 x np	3,1 x np		2,7 x np		3,1 x np			3,3 x np		3,1 x np
Height	mm	320	470	755	678 - 720	1008 - 1050	1353 - 1395	584	848	1375	1071	1124	1569	1569	2034	1372	1819	2272 - 2317	1657 - 1707		2190 - 2206
Wide	mm	200			310			320			320	530				609			810	790	

* standard AISI316L 0,5mm

Construction Details

The company's know-how is also reflected in the attention to every functional detail

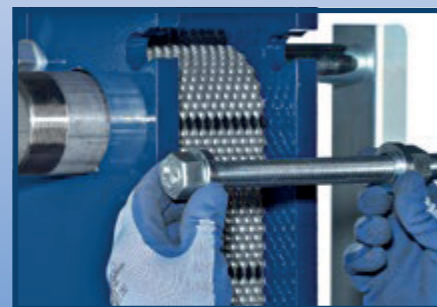
Carrying bar with stainless steel contact



Easy positioning of plates and optimized footprint



Easy assembly and disassembly



Thermal Insulations

TYPE PB

Insulation case



TYPE TF

Insulation shell

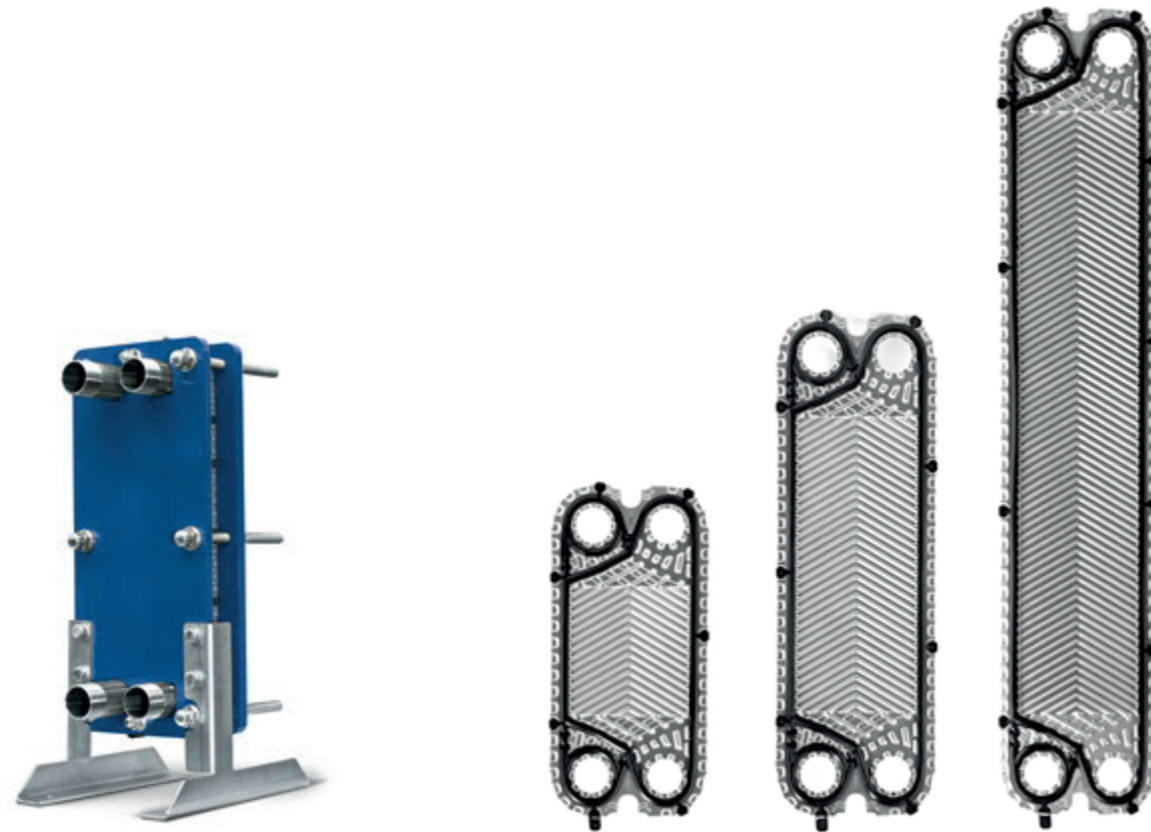


TYPE FL

Insulation jacket



DN32



Product Range	P020+			P040+			P080+		
Exchange area [m ²]	0,021			0,041			0,081		
Width [mm]				145					
Height [mm]	305			455			740		
Connections diameter				DN32 1"1/4					
Channel capacity [l]	0,063			0,103			0,181		
Tightening quote [mm] *				2,9					
Plate weight (with gasket) [Kg] *	0,18			0,274			0,452		
Corrugation angle				A					
Max. water flowrate [m ³ /h]				19					
PS=> Max working pressure [bar]	10	16	25	10	16	25	10	16	25

* standard AISI316L 0,5mm



Plates are available in only one thermal lengths A

DN32	DN50	DN65	DN80	DN100	DN150	DN200
------	------	------	------	-------	-------	-------

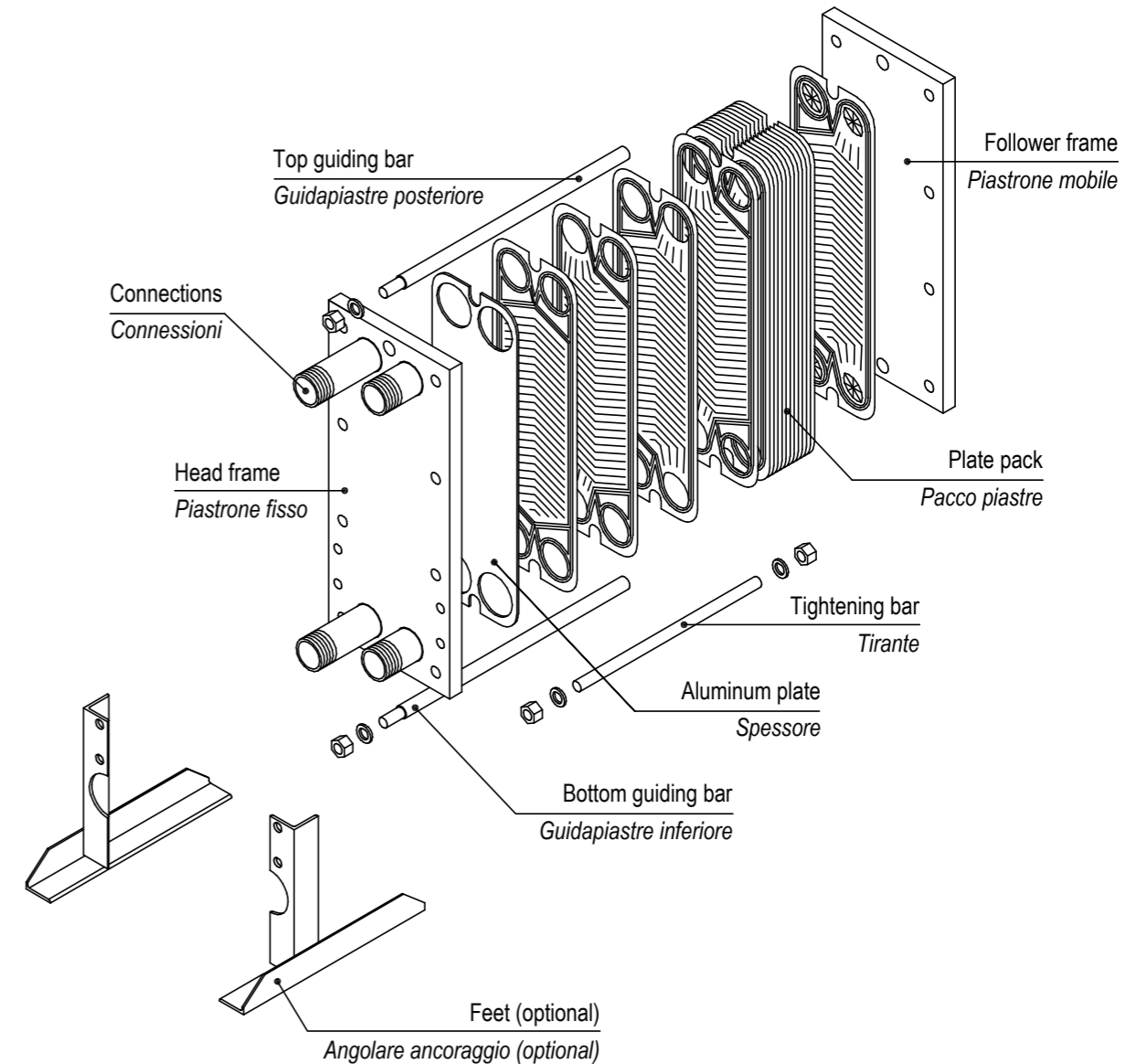
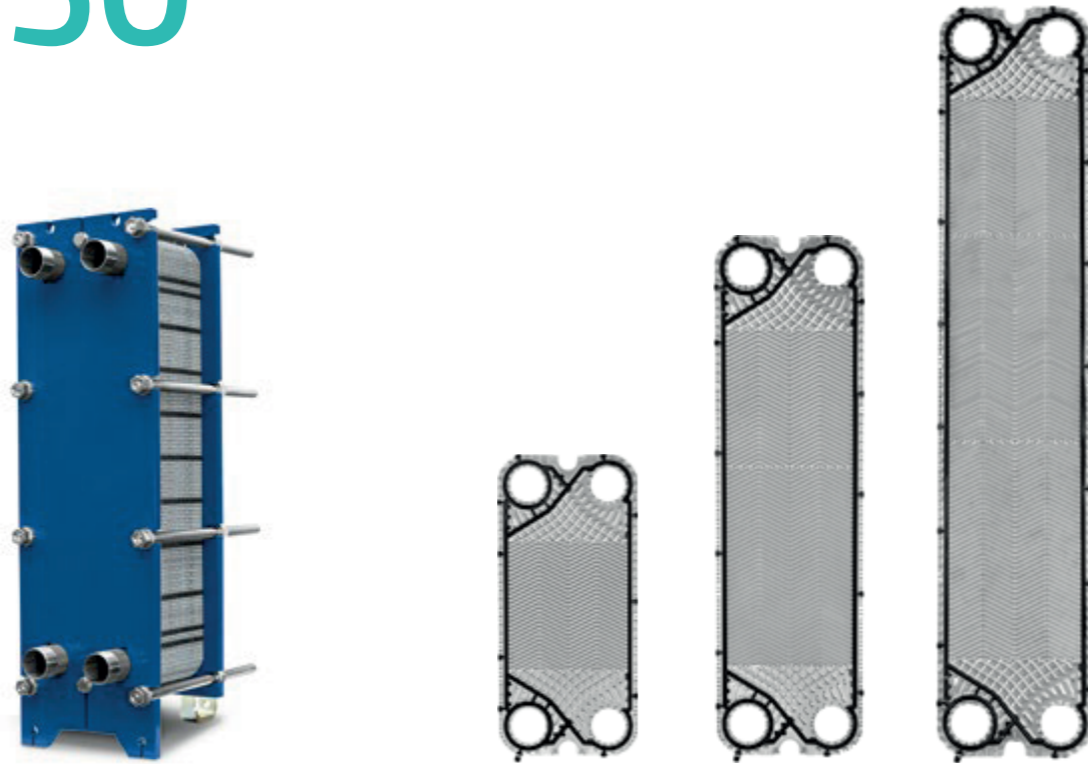


Plate Heat Exchanger	S020+			S040+			S080+			
Height	320			470			755			
Width	200			200			200			
Vertical connection pitch	230			380			665			
Horizontal connection pitch	68			68			68			
Max. number of plates	29	49	75	29	49	75	29	49	75	101
Depth	185	285	485	185	285	485	185	285	485	605
Connection diameter (DN)	DN32 1"1/4									

DN50



Product Range	P070+			P160+			P260+		
Exchange area [m ²]	0,078			0,164			0,254		
Width [mm]				245					
Height [mm]	527			857			1202		
Connections diameter				DN50 2"					
Channel capacity [l]	0,217			0,383			0,555		
Tightening quote [mm] *				2,9					
Plate weight (with gasket) [Kg] *	0,517			0,856			1,213		
Corrugation angle				A/B					
Max. water flowrate [m ³ /h]				63					
PS=> Max working pressure [bar]	10	16	25	10	16	25	10	16	25

* standard AISI316L 0,5mm



Plates are available in two thermal lengths (A/B)

DN32	DN50	DN65	DN80	DN100	DN150	DN200
------	------	------	------	-------	-------	-------

All data and drawings herewith described can be changed without prior notice and are not binding for the manufacturer.

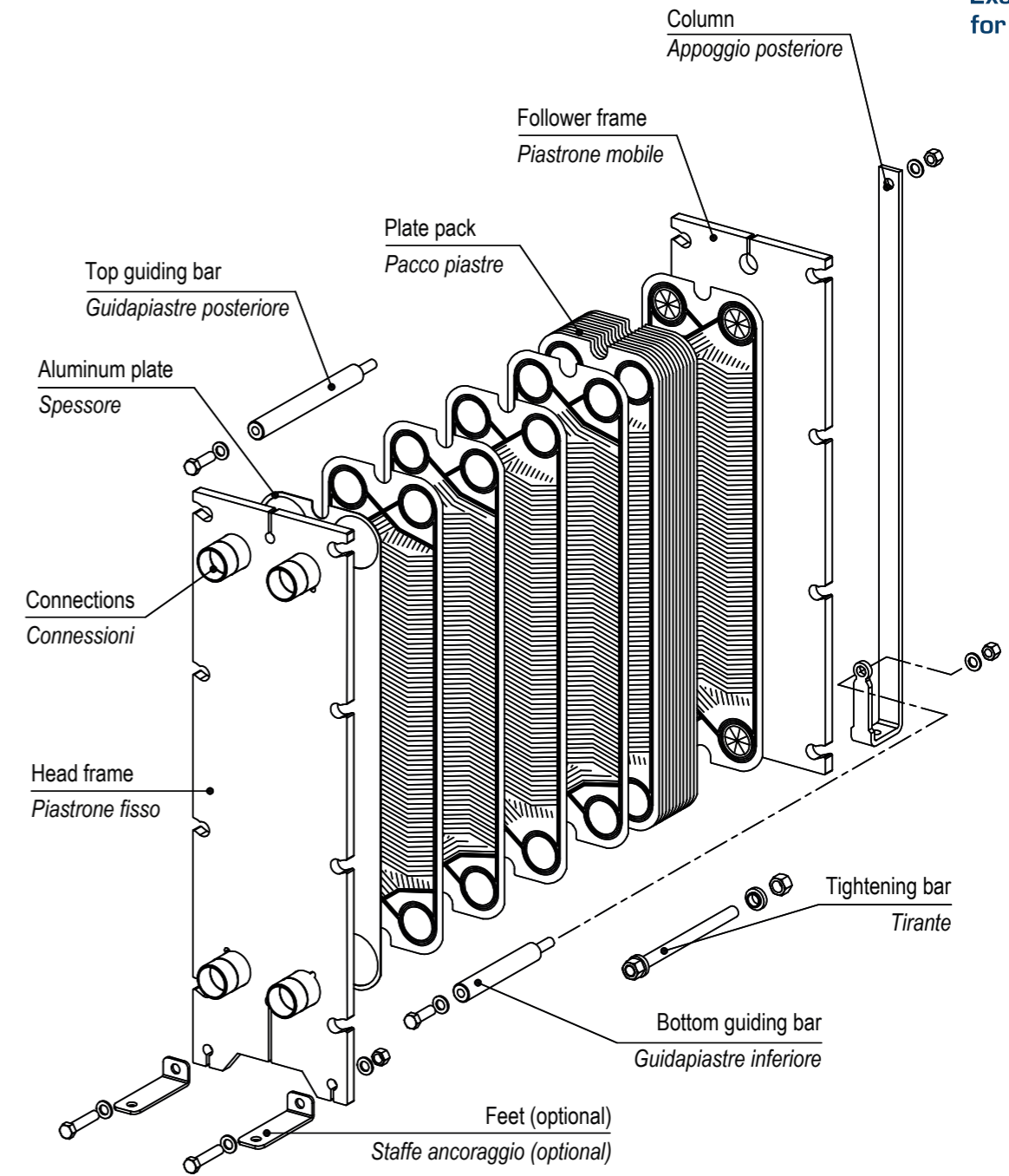
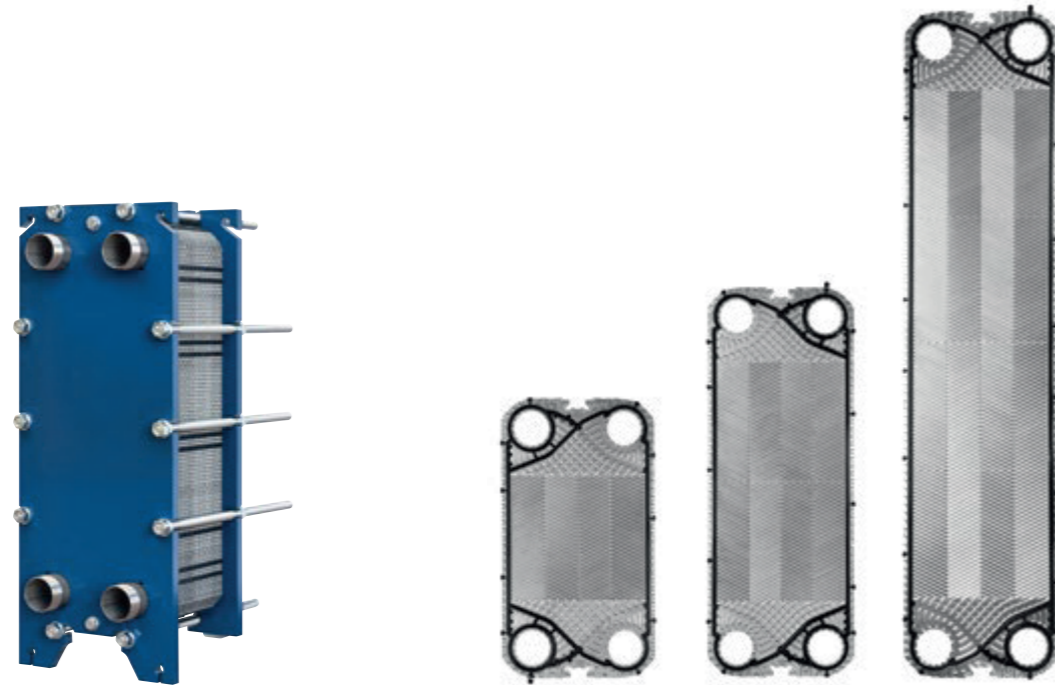


Plate Heat Exchanger	S070+					S160+					S260+				
Height	678 / 720					1008 / 1050					1353 / 1395				
Width	310					310					310				
Vertical connection pitch	420					750					1095				
Horizontal connection pitch	140					140					140				
Max. number of plates	41	71	101	151	41	71	101	151	251	41	71	101	151	251	
Depth	330	470	610	840	330	470	610	840	1300	330	470	610	840	1300	
Connection diameter (DN)	DN50 2"														

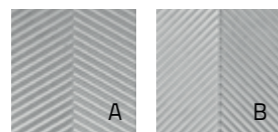
All dimensions are in mm - Np = number of plates.

DN65



Product Range	P110+			P210+			P410+		
Exchange area [m ²]	0,118			0,21			0,395		
Width [mm]				320					
Height [mm]	584			848			1375		
Connections diameter				DN65 2"1/2					
Channel capacity [l]	0,335			0,52			0,891		
Tightening quote [mm] *				3					
Plate weight (with gasket) [Kg] *	0,722			1,058			1,738		
Corrugation angle				A/B					
Max. water flowrate [m ³ /h]				80					
PS=> Max working pressure [bar]	10	16	25	10	16	25	10	16	25

* standard AISI316L 0,5mm



Plates are available in two thermal lengths (A/B)

DN32	DN50	DN65	DN80	DN100	DN150	DN200
------	------	-------------	------	-------	-------	-------

All data and drawings herewith described can be changed without prior notice and are not binding for the manufacturer.

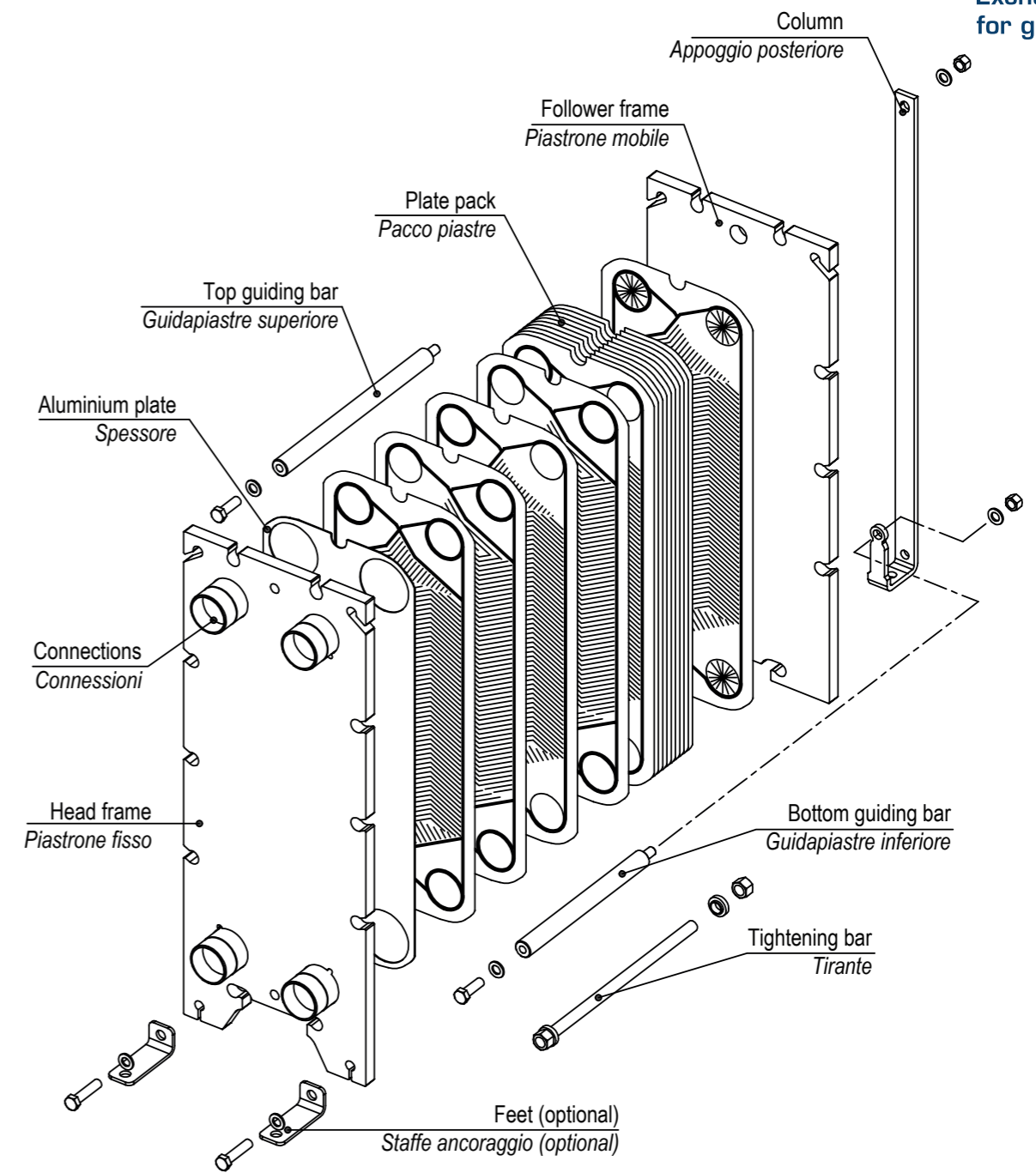
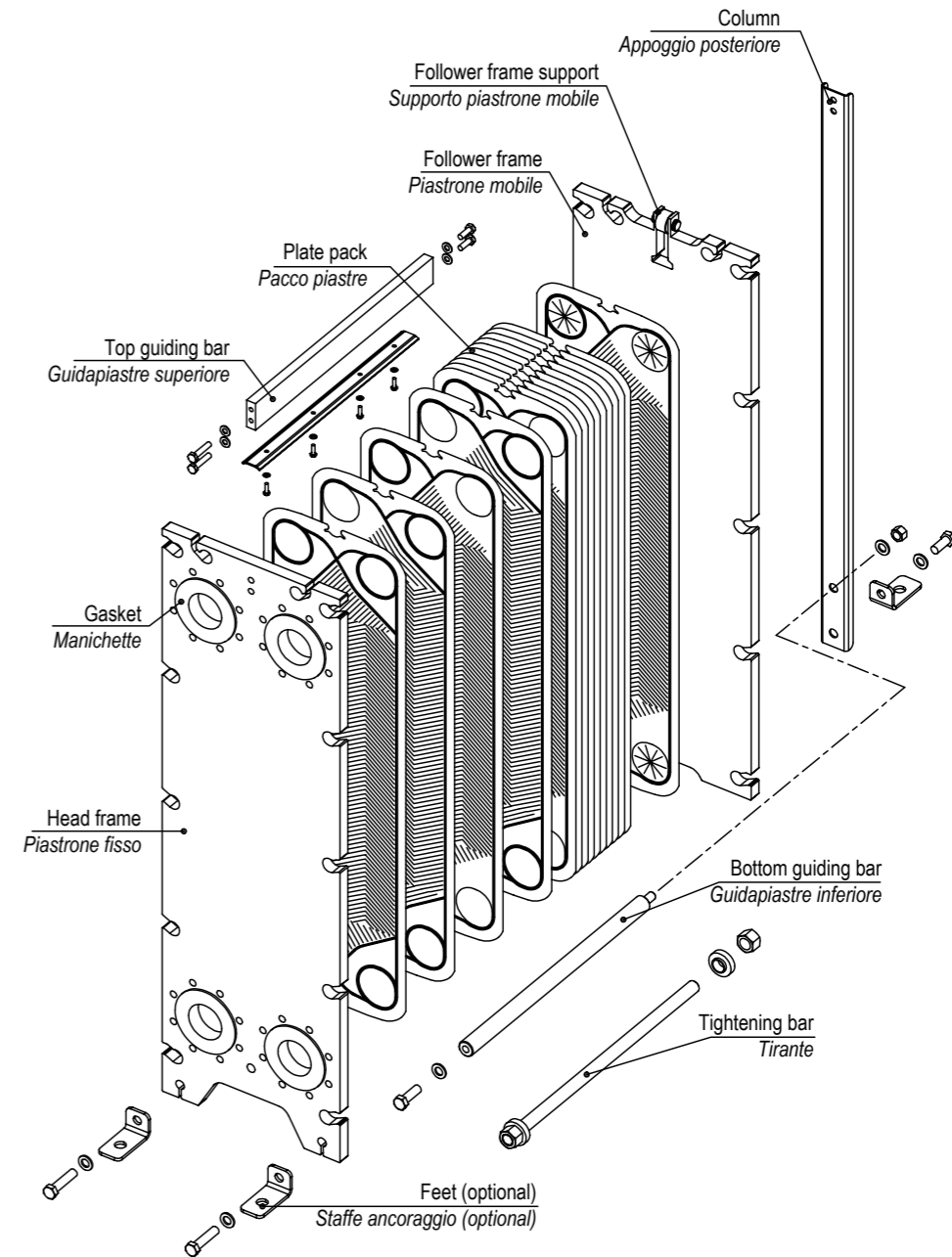


Plate Heat Exchanger	S110+				S210+				S410+				
Height	729 / 760				992 / 1024				1551				
Width	385 / 400				385 / 400				400				
Vertical connection pitch	456				720				1247				
Horizontal connection pitch	192				192				192				
Max. number of plates	41	71	101	151	41	71	101	151	41	71	101	151	251
Depth	355	495	635	865	355	495	635	865	485	485	625	855	1315
Connection diameter (DN)	DN65 2"1/2												

All dimensions are in mm - Np = number of plates.

DN80



Product Range	P270+		
Exchange area [m ²]	0,273		
Width [mm]	320		
Height [mm]	1071		
Connections diameter	DN80 3"		
Channel capacity [l]	0,68		
Tightening quote [mm] *	3		
Plate weight (with gasket) [Kg] *	1,321		
Corrugation angle	A/B		
Max. water flowrate [m ³ /h]	110		
PS=> Max working pressure [bar]	10	16	25

* standard AISI316L 0,5mm

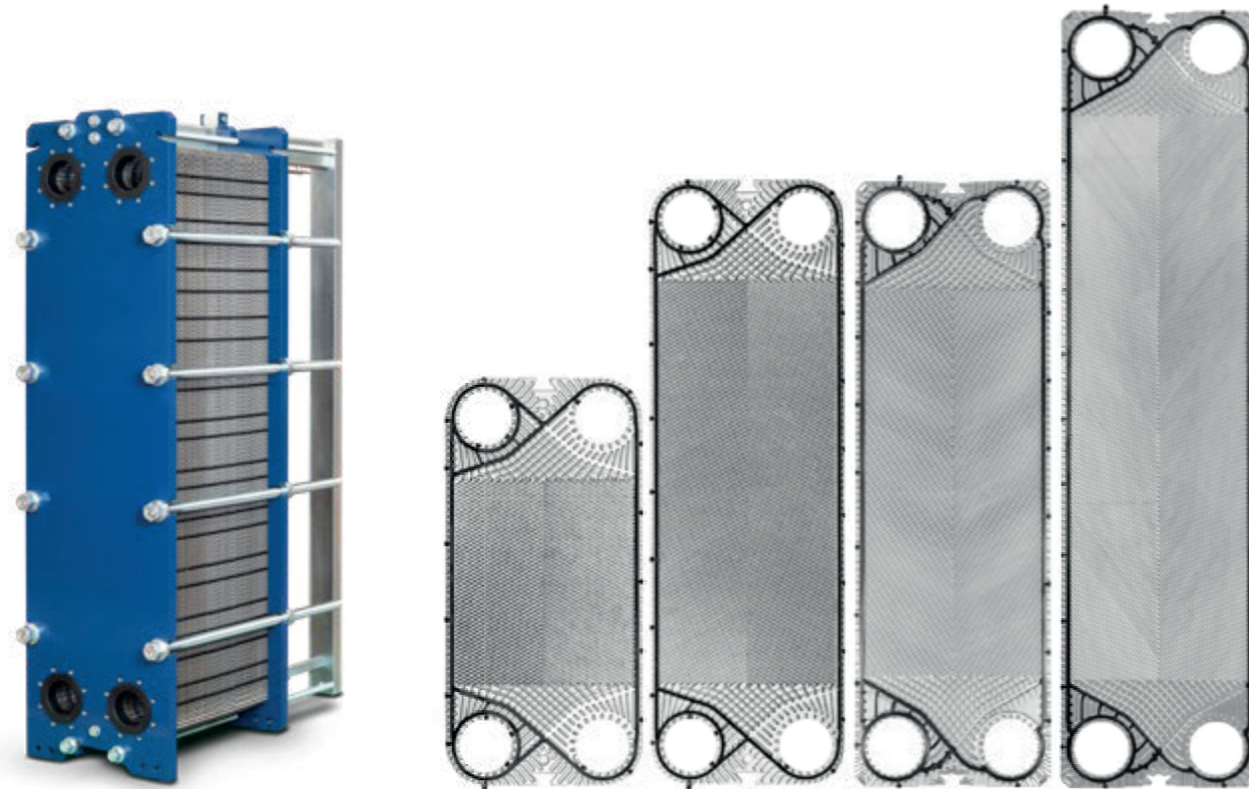


Plates are available in two thermal lengths (A/B)

DN32	DN50	DN65	DN80	DN100	DN150	DN200
------	------	------	------	-------	-------	-------

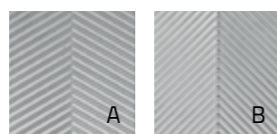
Plate Heat Exchanger	S270+				
Height	1270				
Width	400				
Vertical connection pitch	927				
Horizontal connection pitch	201				
Max. number of plates	41	71	101	151	251
Depth	485	485	625	855	1315
Connection diameter (DN)	DN80 3"				

DN100

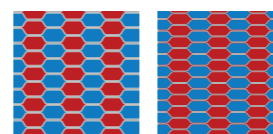


Product Range	P300+			P450+			P455+			P705+		
Exchange area [m ²]	0,268			0,482			0,47			0,688		
Width [mm]	425			425			427			427		
Height [mm]	877			1322			1325			1770		
Connections diameter	DN100 4"											
Channel capacity [l]	0,766			1,217			1,033			1,413		
Tightening quote [mm] *	3,1			3,1			2,7			2,7		
Plate weight (with gasket) [Kg] *	1,417			2,207			2,074			2,832		
Corrugation angle	A/B											
Max. water flowrate [m ³ /h]	240											
PS=> Max working pressure [bar]	10	16	25	10	16	25	10	16	25	10	16	25

* standard AISI316L 0,5mm



Plates are available in two thermal lengths (A/B) and two different channel heights: 2,6 and 2,2 mm



DN32	DN50	DN65	DN80	DN100	DN150	DN200
------	------	------	------	-------	-------	-------

All data and drawings herewith described can be changed without prior notice and are not binding for the manufacturer.

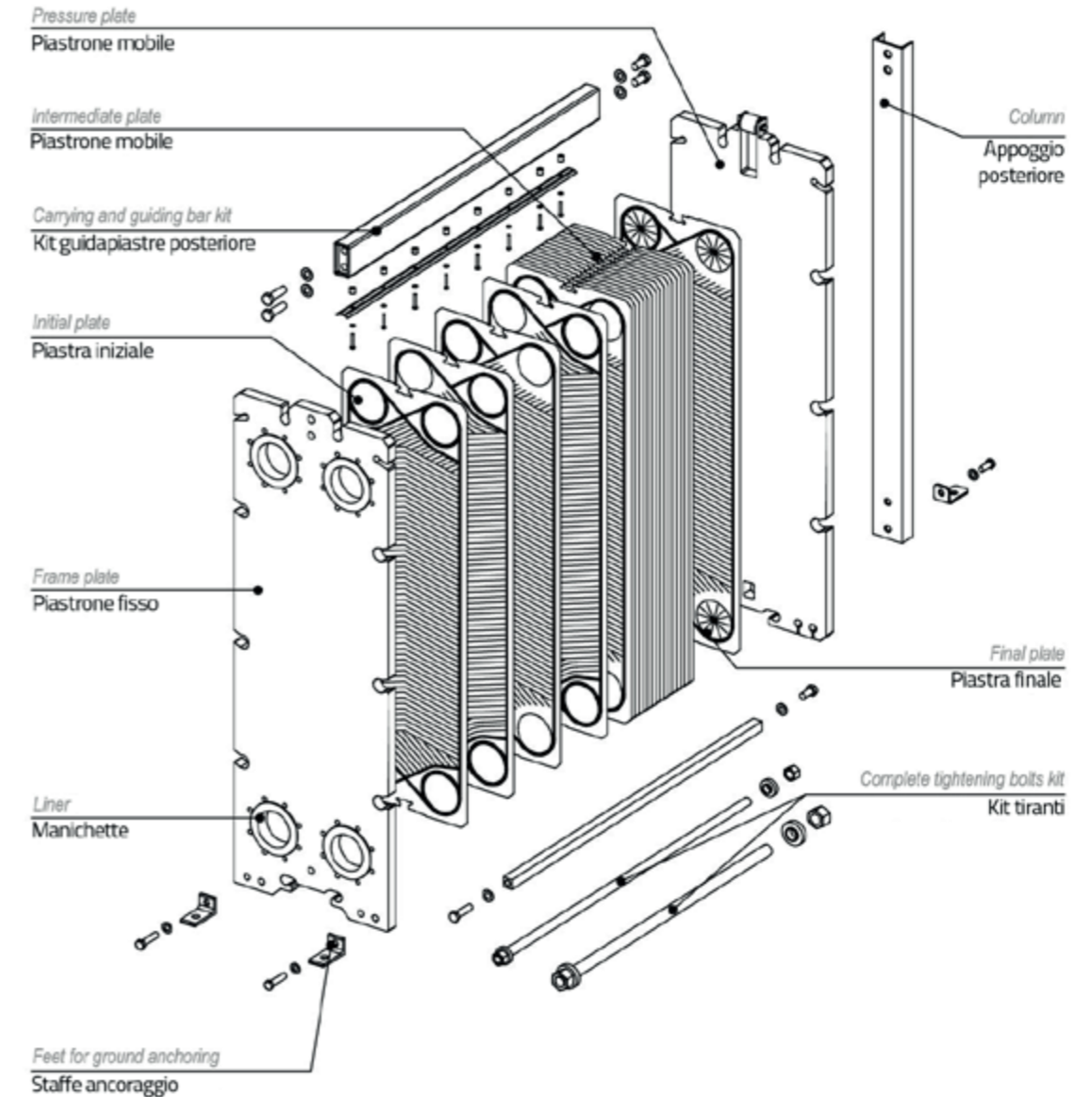
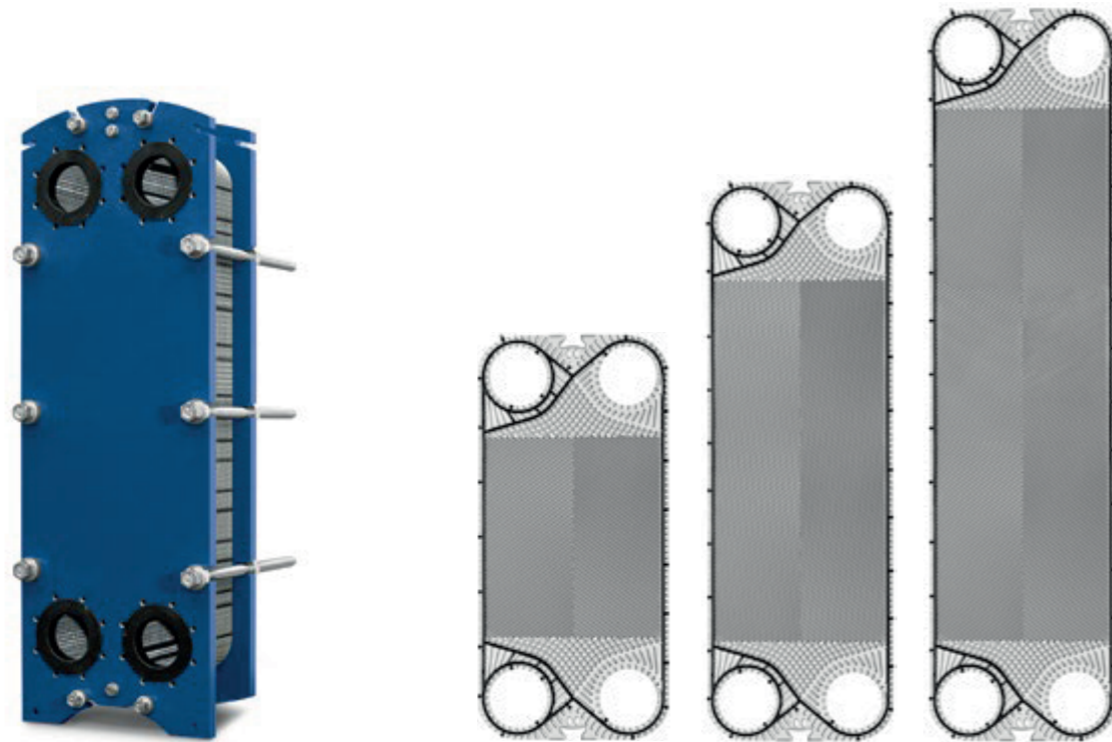


Plate Heat Exchanger	S300+				S450+				S455+				S705+			
Height	1124				1569				1569				2034			
Width	509 / 530				530				530				530			
Vertical connection pitch	705				1150				1150				1595			
Horizontal connection pitch	250				250				250				250			
Max. number of plates	101	201	301	401	101	201	301	401	101	201	301	401	101	201	301	401
Depth	790	1290	1790	2290	800	1300	1800	2300	800	1300	1800	2300	800	1300	1800	2300
Connection diameter (DN)	DN100 4"															

All dimensions are in mm - Np = number of plates.

DN150



Product Range	P400+		P600+		P900+	
Exchange area [m ²]	0,39		0,645		0,9	
Width [mm]			500			
Height [mm]	1055		1503		1951	
Connections diameter			DN150 6"			
Channel capacity [l]	1,122		1,659		2,197	
Tightening quote [mm] *			3,1			
Plate weight (with gasket) [Kg] *	1,929		2,858		3,786	
Corrugation angle			A/B			
Max. water flowrate [m ³ /h]			380			
PS=> Max working pressure [bar]	10	16	10	16	10	16

* standard AISI316L 0,5mm



Plates are available in two thermal lengths (A/B)

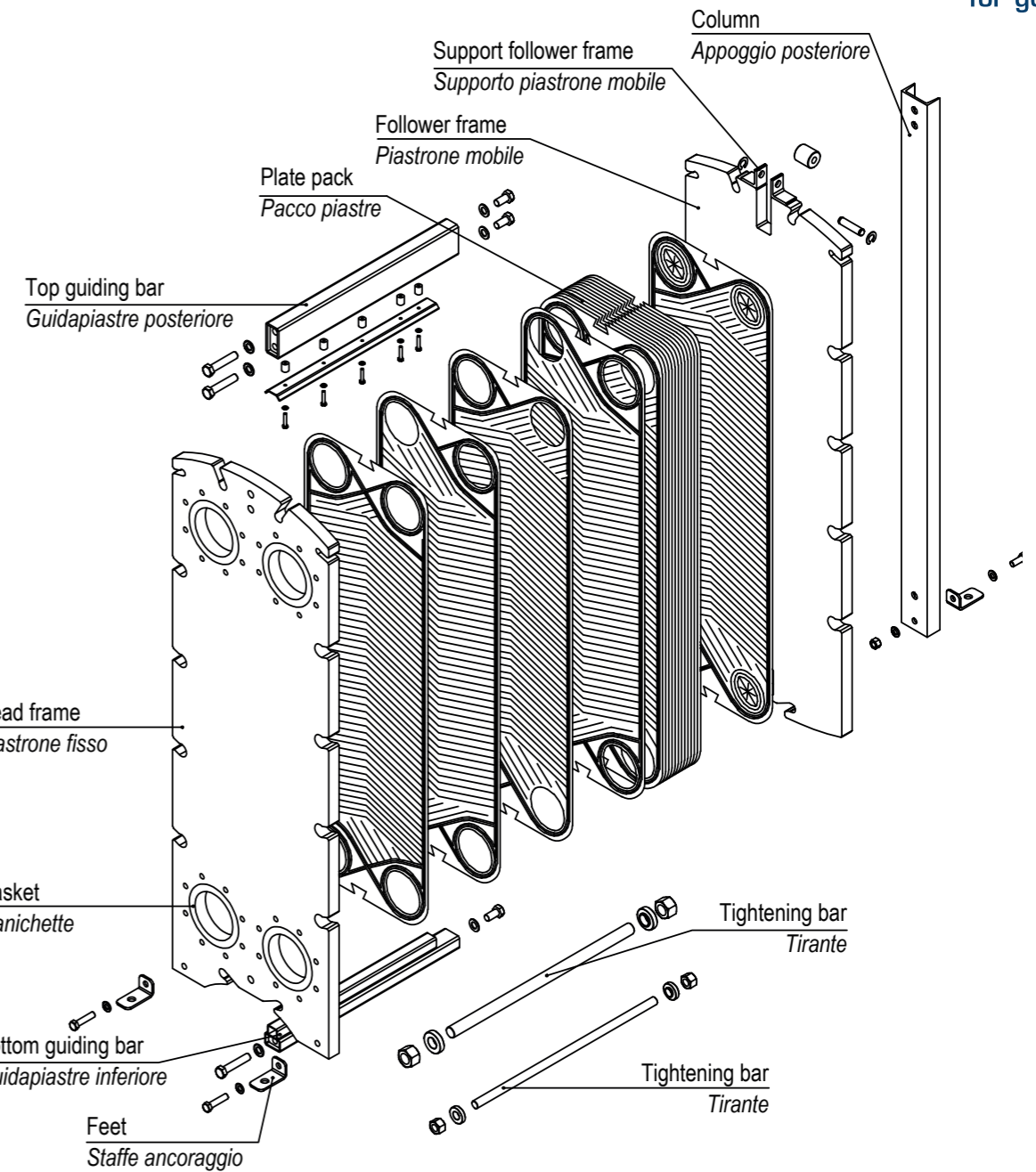
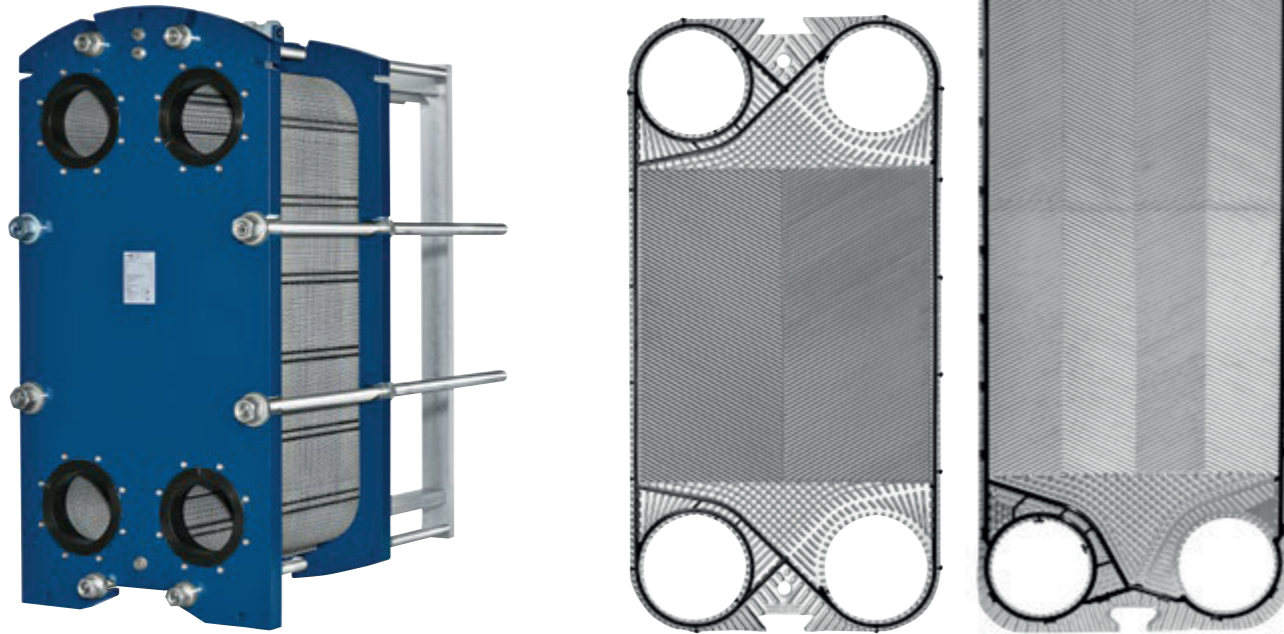


Plate Heat Exchanger	S400+					S600+					S900+					
Height	1371					1819					2272 / 2317					
Width	609					609					609					
Vertical connection pitch	840					1288					1736					
Horizontal connection pitch	287					287					287					
Max. number of plates	101	201	301	401	551	101	201	301	401	551	101	201	301	401	551	701
Depth	800	1300	1800	2300	3100	800	1300	1800	2300	3100	800	1300	1800	2300	3100	3930
Connection diameter (DN)	DN150 6"															

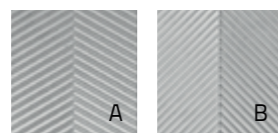
- DN32
- DN50
- DN65
- DN80
- DN100
- DN150
- DN200

DN200



Product Range	P650+		P990+	
Exchange area [m ²]	0,606		0,972	
Width [mm]	678		668	
Height [mm]	1340		1825	
Connections diameter	DN200 8"			
Channel capacity [l]	2,109		2,399	
Tightening quote [mm] *	3,3		3,1	
Plate weight (with gasket) [Kg] *	3,179		4,5	
Corrugation angle	A/B			
Max. water flowrate [m ³ /h]	800		730	
PS=> Max working pressure [bar]	10	16	10	16

* standard AISI316L 0,5mm



Plates are available in two thermal lengths (A/B)

DN32	DN50	DN65	DN80	DN100	DN150	DN200
------	------	------	------	-------	-------	-------

All data and drawings herewith described can be changed without prior notice and are not binding for the manufacturer.

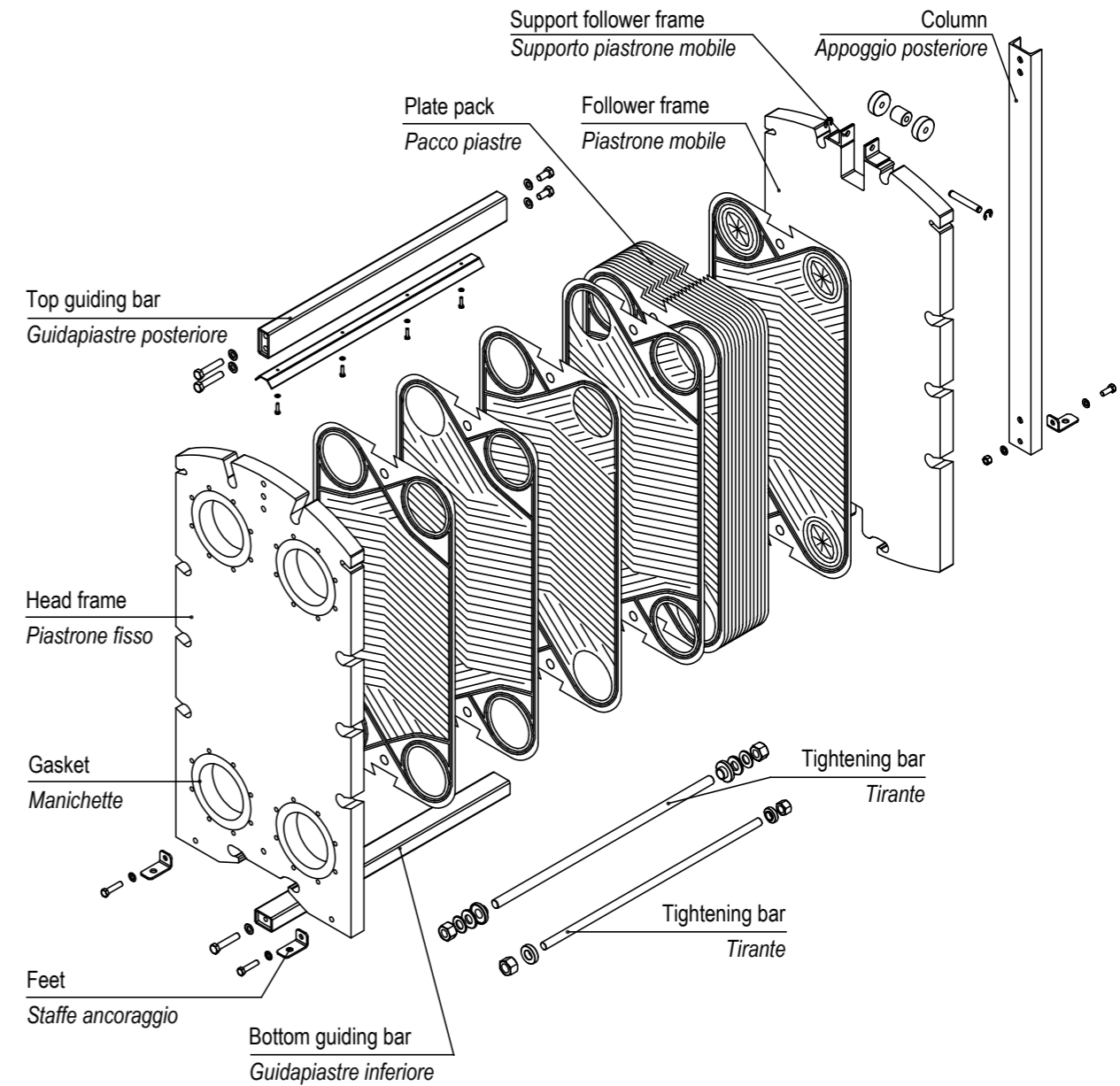
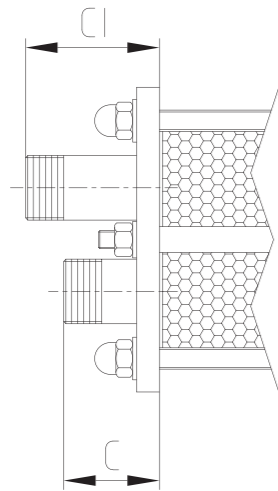


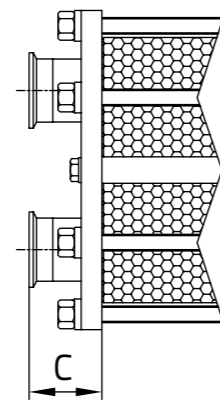
Plate Heat Exchanger	S650+				S990+			
Height	1657 / 1707				2190 / 2206			
Width	810				790			
Vertical connection pitch	1055				1536			
Horizontal connection pitch	391				396			
Max. number of plates	151	251	351	551	151	251	351	551
Depth	1220	1820	2220	3130	1220	1820	2220	3120
Connection diameter (DN)	DN200 8"							

All dimensions are in mm - Np = number of plates.



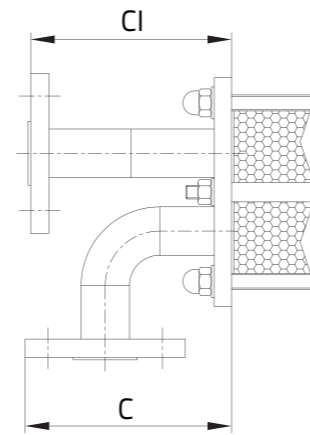
GAS MALE THREADED CONNECTIONS

J/M/W



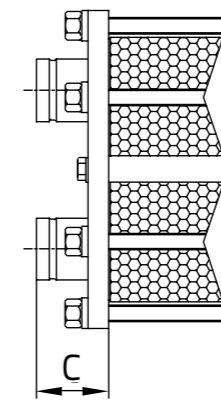
ISO 2852 CLAMP CONNECTIONS

R



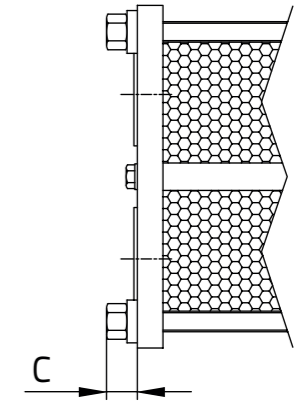
ISO STUDED PORTS

X



GROOVED PIPE CONNECTIONS

Y



ISO STUDED PORTS

A/B/U

ANSI STUDED PORTS

C/E/V

Connections dimensions (see drawings C - CI, all dimensions are in mm)

	DN32 (CI - C)	DN50	DN65			DN80	DN100	DN150	DN200	
			S110+	S210+	S410+				S650+	S990+
J-J	63 - 88	88	88	88	-	-	-	-	-	
M-M	73	84	93	93	-	-	-	-	-	
J-M	59 - 73	84	93	93	-	-	-	-	-	
R-R	63 - 88	88	88	88	-	-	-	-	-	
J-R	88 - 63	88	88	88	-	-	-	-	-	
Y-Y	63 - 118	88	88	88	-	-	-	-	-	
W-W	63 - 88	88	-	-	-	-	-	-	-	
X-X	180 - 176	-	-			-	-	-	-	
A-A B-B U-U	-	-	36	36	36	36	48	48	63 48	
C-C E-E V-V	-	-	36	36	36	36	48	48	63 48	

Frames

- In carbon steel, standard or special painting
- In stainless steel AISI 304 (EN 1.4301)

Connections

- Stainless steel/Titanium/Moplen threaded
- Flanged EN/ASME
- Din 11851 and Triclamp

Plates from 0,4 to 0,7 mm

- Stainless steel AISI 304 (EN 1.4301)
- Stainless steel AISI 316L (EN 1.4404)
- Titanium (Grade 1)
- SMO 254 (EN 1.4547)
- **DOUBLE WALL (models 040+ / 080+ / 160+)**

Double Wall



Gaskets

Materials	Minimum and maximum temperatures	
NBR	-10 °C	110 °C
EPDM Prx.	-10 °C	150 °C
FPM A	0 °C	140 °C
FPM GF	0 °C	160 °C
HNBR	0 °C	135 °C

The temperatures must be considered not applicable in all working conditions.

		DN32			DN50			DN65			DN80	DN100				DN150			DN200	
		S020+	S040+	S080+	S070+	S160+	S260+	S110+	S210+	S410+	S270+	S300+	S450+	S455+	S705+	S400+	S600+	S900+	S650+	S990+
Plates	AISI 304	●	●	●	●	●	●	●	●	●	●	●	●	●	●	●	●	●	●	●
	AISI 316L	●	●	●	●	●	●	●	●	●	●	●	●	●	●	●	●	●	●	●
	254 SMO	●	●	●	●	●	●	●	●	●	●	●	●	●	●	●	●	●	●	●
	Titanium	●	●	●	●	●	●	●	●	●	●	●	●	●	●	●	●	●	●	●
Gaskets	NBR	●	●	●	●	●	●	●	●	●	●	●	●	●	●	●	●	●	●	●
	EPDM Prx.	●	●	●	●	●	●	●	●	●	●	●	●	●	●	●	●	●	●	●
	FPM A - FPM GF	●	●	●	●	●	●	●	●	●	●	●	●	●	●	●	●	●	●	●
	HNBR	●	●	●	●	●	●	●	●	●	●	●	●	●	●	●	●	●	●	●
Frames **	Carbon steel	●	●	●	●	●	●	●	●	●	●	●	●	●	●	●	●	●	●	●
	Stainless steel	●	●	●	●	●	●	●	●	●	●	●	●	●	●	●	●	●	●	●
Connections **	J (AISI316)	●	●	●	●	●	●	●	●	●	●	●	●	●	●	●	●	●	●	●
	M (PP)	●	●	●	●	●	●	●	●	●	●	●	●	●	●	●	●	●	●	●
	W (Titanium)	●	●	●	●	●	●	●	●	●	●	●	●	●	●	●	●	●	●	●
	R (Clamp)	●	●	●	●	●	●	●	●	●	●	●	●	●	●	●	●	●	●	●
	Y (Victaulic)	●	●	●	●	●	●	●	●	●	●	●	●	●	●	●	●	●	●	●
	X (AISI304)	●	●	●	●	●	●	●	●	●	●	●	●	●	●	●	●	●	●	●
	A / C (Rubber lined)							●	●	●	●	●	●	●	●	●	●	●	●	●
	B / E (AISI316L lined)							●	●	●	●	●	●	●	●	●	●	●	●	●
	U / V (Unlined)							●	●	●	●	●	●	●	●	●	●	●	●	●

Thermal Insulations

3 type of insulation, depending on dimensions and uses

Thermal Insulation PB

DN 65, DN 80, DN 100, DN 150 and DN 200

PB is the insulation specifically designed for HVAC applications of our plate heat exchangers.

It is a self-supporting modular structure made of insulated panels (45 mm thickness) anchored together using closure hooks and coupled in such a way as to minimize thermal bridges.

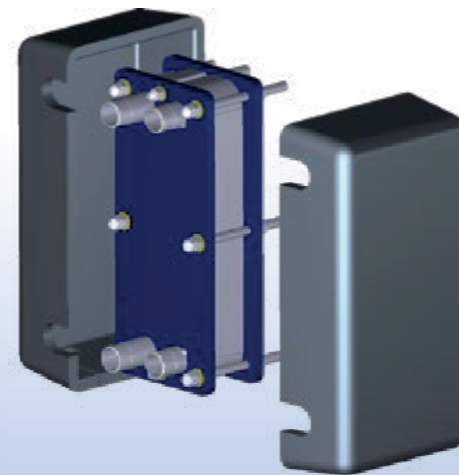


Thermal Insulation TF

DN 32, DN 50 and DN 65

TF is a prefabricated, flexible, and semi-rigid insulation, easy to install and adapt to any product configuration and specific customer needs.

Thanks to its special "double-layer" structure, composed of two different closed-cell expanded elastomers (total thickness up to 30 mm), it is suitable for both heating and cooling applications.

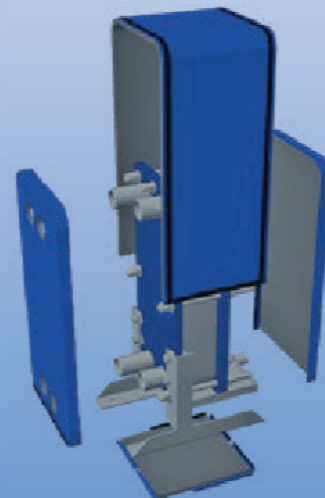


Thermal Insulation FL

DN 32, DN 50 and DN 65

FL is the insulation designed to combine thermal insulation performance, compactness, and versatility in heating and cooling applications of our plate heat exchangers up to size DN65-2"1/2.

Made of closed-cell expanded elastomer with an external protective PVC coating, it is highly flexible and soft to the touch.



Other Accessories

Plate pack protection and Drip Tray

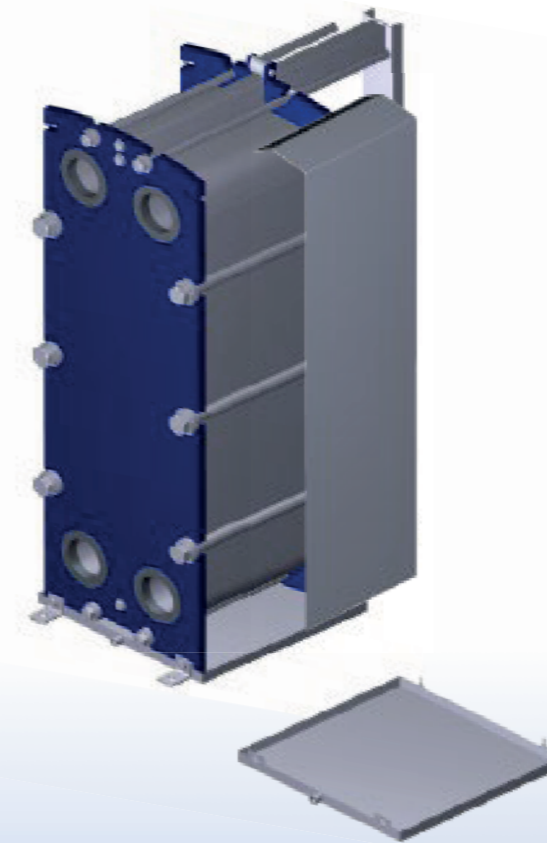


Plate Pack Protection

All models

The Plate Pack Protection is a safety device specifically designed to protect personnel in case of unexpected fluid leaks from the heat exchanger. Highly recommended for hazardous applications, it should always be used when temperatures exceed 60°C, even for non-critical fluids.

The Plate Pack Protection consists of two or more shaped plates that cover the plate pack, adapting perfectly to the shapes of each heat exchanger model.

Drip Tray

All models

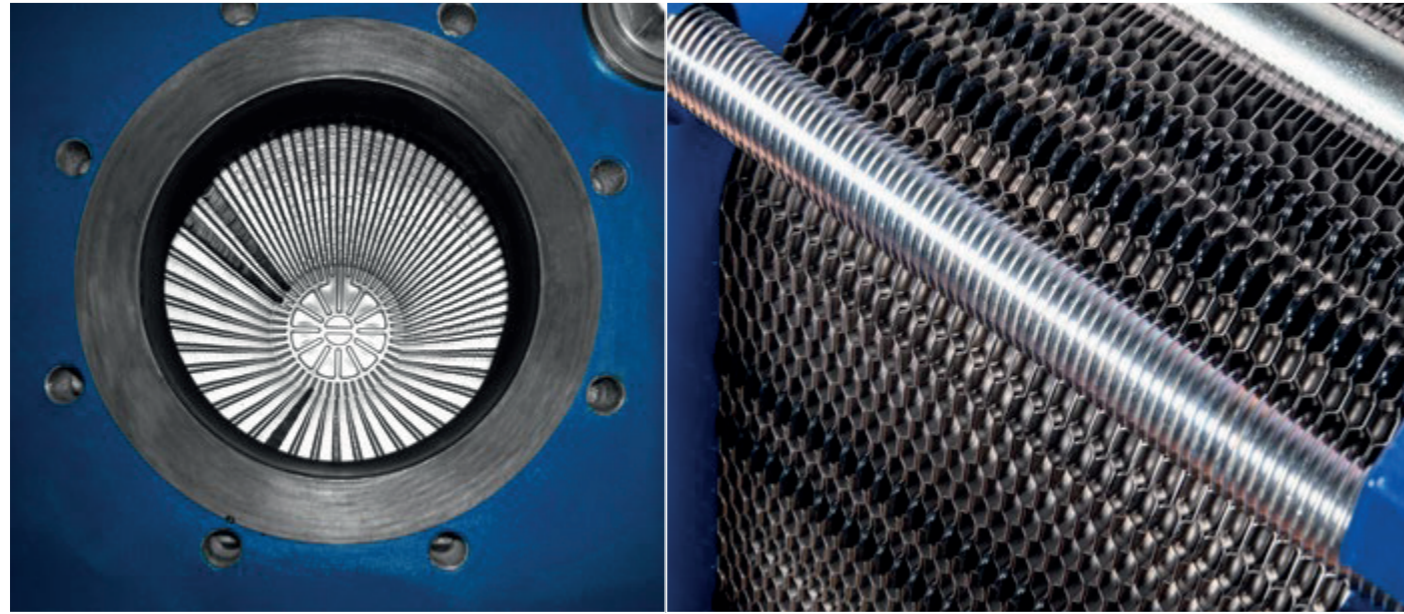
The Drip Tray is a protective device specifically designed to collect water or other fluids in case of unexpected leaks or when the heat exchangers are open for maintenance.

Recommended for hazardous substances and when additional protection for the external environment is needed, it is also used in cooling applications to collect condensation that may form outside the heat exchanger.

Certified quality and reliability

Cipriani PHE is able to find the best solution for every compatible application.

plate heat exchangers that are certified, reliable and designed to offer you the best performance according to the project's needs.



Products always guaranteed

Guaranteed traceability of all materials and components

Pressures (g) up to: **25 bar**
Temperatures up to: **160°C**

Accurate inspection of the finished product

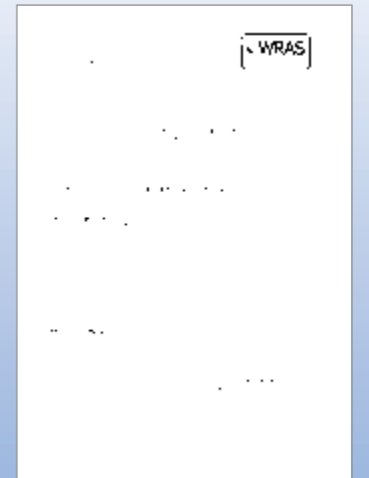
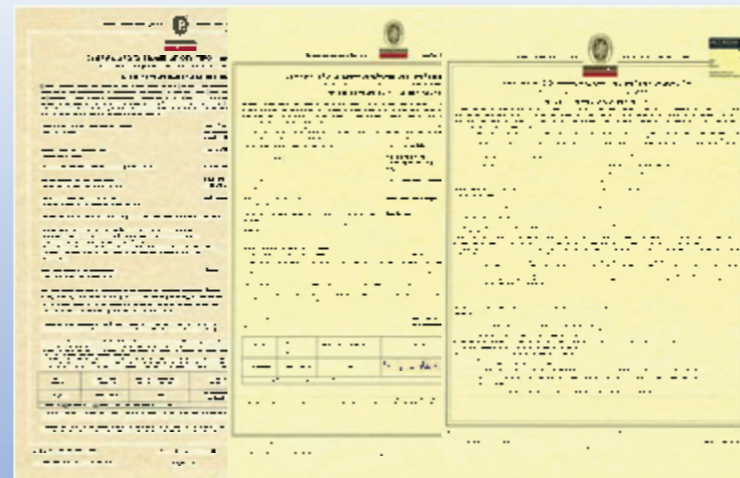
100% of the heat exchangers are factory tested



Exchange for good



Our Certifications



- ISO 45001 Occupational Health and Safety
- ISO 14001 Environmental Management



- PED 2014/68/UE Pressure Equipment Directive Module B,D1 & D (up to Risk Cat. IV)



- ACS Attestation de Conformité Sanitaire



- WRAS EPDMprx rubber compound approved

Brazed plate heat exchangers

The completion of
our plate heat exchanger offering



Exchange
for good

The optimum solution for any application:

- Heat Pumps
- Solar Technology
- Energy Recovery
- District Heating
- Domestic Water Heating

Materials of construction

- Plates: Stainless Steel AISI 316L
- Connections: Stainless Steel AISI 304
- Brazing material: Copper (99.9 % pure)

Operating data

- Maximum operating temperature (TS): +200°C
- Standard operating pressure (PS at 200°C): 16 bar
- Testing pressure (PT): 19,2 bar

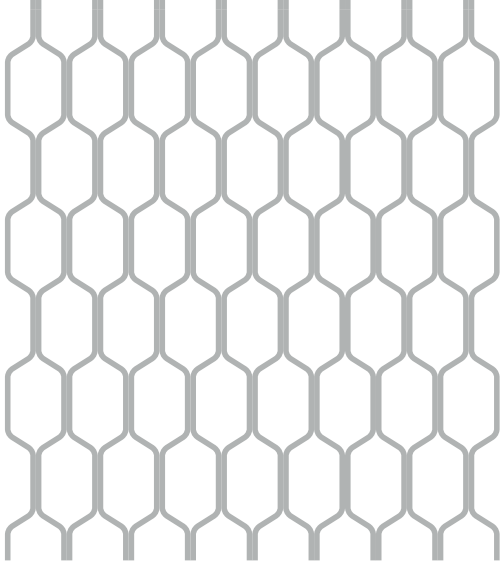
Standard product configuration

- Single-pass, counter-current and parallel flows with four connections on front plate



MODELS		SSA 07 8	SSA 09 8	SSA 62 8	SSA 82 8	SSA 82 6	SSA X2 6
Connections		G 3/4"	G 3/4"	G 1"	G 1" 1/4	G 1" 1/4	G 2"
Theta Pattern		H	H	H	H	M	M
Height	H/mm	216	327	378	529	529	527
	h/mm	182	289	320	469	469	442
Width	B/mm	77	79	122	121	121	244
	b/mm	41	41	64	62	62	160
A/mm		20	20	27	27	27	38
L/mm		10,0+Np*2,30	10,0+Np*2,30	12,0+Np*2,15	11,0+Np*2,15	11,0+Np*2,15	12,0+Np*2,35
Weight [kg]		0,05+Np*0,06	1,1+Np*0,08	2,0+Np*0,12	2,0+Np*0,17	2,0+Np*0,17	10,0+Np*0,4





— MADE IN ITALY —

Exchange
for good



DANIELI S.p.A.
Udine



FIAT PROJECT
Torino



TETRA PAK
Modena



Danone W



Maasboulevard



IDFC - Hotel
De Police
De Chessy



Museum
Aan
De Stroom



Migros
Fitnesspark



Rohde AG
Oberflächentechnik



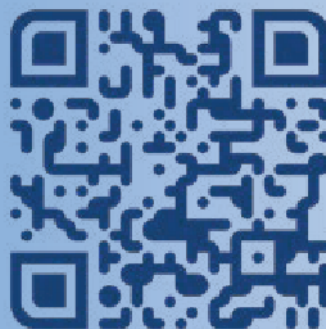
World Trade
Center



Via Nassar, 46
37026 Pescantina,
Verona (VR)

Ph. +39.045.6750065
Fax +39.045.6750118
info@cipriani-phe.com

cipriani-phe.com



Scan the QR Code

consult and
download all the
technical data sheets
of the products and
accessories.